

May 14, 2009

<http://www.cpsc.gov/cpsc/pub/prerel/prhtml09/09217.html>

## NEWS from CPSC

### U.S. Consumer Product Safety Commission

FOR IMMEDIATE RELEASE

May 13, 2009

Release #09-217

**Firm's Recall Hotline: (888) 325-1184**

CPSC Recall Hotline: (800) 638-2772

CPSC Media Contact: (301) 504-7908

## Composite Decks Recalled by Louisiana-Pacific; Decks Can Deteriorate and Break, Posing Fall Hazard

WASHINGTON, D.C. - The U.S. Consumer Product Safety Commission, in cooperation with the firm named below, today announced a voluntary recall of the following consumer product. Consumers should stop using recalled products immediately unless otherwise instructed.

**Name of Product:** Composite Decks

**Units:** About 48 million linear feet (decks vary in size)

**Manufacturer:** Louisiana-Pacific (LP) Corp., of Nashville, Tenn.

**Hazard:** The recalled decking can prematurely deteriorate and unexpectedly break. Consumers can fall through broken decking and suffer serious injuries.

**Incidents/Injuries:** LP has received 37 reports of composite decks breaking, resulting in 14 injuries, including a broken wrist, sprained ankle, minor lacerations and bruises.

**Description:** The recall includes outdoor deck board and railings sold under the brand names LP WeatherBest®, ABTCo., and Veranda®. They are composite products that look similar to natural wood and were sold in various colors including Tuscan Walnut/Chestnut, Driftwood Grey/Greystone, Pacific Cedar and Western Redwood. Veranda decking products were manufactured by multiple firms; only products manufactured by LP are included in this recall.

**Sold at:** The Home Depot (Veranda® brand) and building product dealers (LP WeatherBest® and ABTCo. brands) nationwide from January 2005 to August 2008 for between \$1.50 and \$2.25 per linear foot.

**Manufactured in:** United States

**Remedy:** Consumers with the recalled decking should immediately contact LP for a free inspection. If the decking is affected by premature deterioration, LP will arrange for a free replacement.

**Consumer Contact:** For additional information, contact LP toll-free at (888) 325-1184 between 6 a.m. and 5 p.m. PT Monday through Friday, or visit the firm's Web site at [www.deckingnotice.com](http://www.deckingnotice.com)



Photo of installed decking

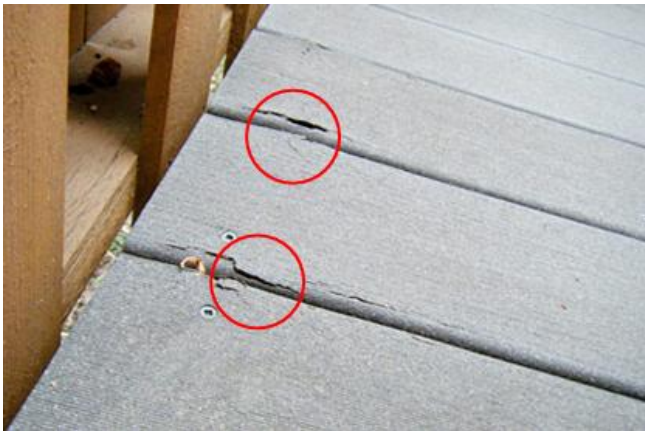


Photo indicating damaged decking



Tuscan Walnut/ Chestnut    Driftwood Grey/ Greystone    Pacific Cedar    Western Redwood

CPSC is still interested in receiving incident or injury reports that are either directly related to this product recall or involve a different hazard with the same product. Please tell us about it by visiting <https://www.cpsc.gov/cgibin/incident.aspx->